

Clarke®



GAS HEATER Model No: Little Devil II

PART NO: 6926020

OPERATION & MAINTENANCE INSTRUCTIONS



DL0425 Rev 9

INTRODUCTION

Thank you for purchasing this CLARKE Gas Heater. Before attempting to use this product, please read this manual thoroughly and follow the instructions carefully. In doing so you will ensure the safety of yourself and that of others around you, and you can look forward to your purchase giving you long and satisfactory service. ***This manual was written for use in the United Kingdom. Please note that in some countries there may be differences in the requirements outlined in this manual and in these cases the local regulations should be consulted by the user.***

GUARANTEE

This product is guaranteed against faulty manufacture for a period of 12 months from the date of purchase. Please keep your receipt which will be required as proof of purchase. This guarantee is invalid if the product is found to have been abused or tampered with in any way, or not used for the purpose for which it was intended. Faulty goods should be returned to their place of purchase, no product can be returned to us without prior permission.

This guarantee does not effect your statutory rights.

ENVIRONMENTAL RECYCLING POLICY



Through purchase of this product, the customer is taking on the obligation to deal with the WEEE in accordance with the WEEE regulations in relation to the treatment, recycling & recovery and environmentally sound disposal of the WEEE.

In effect, this means that this product must not be disposed of with general household waste. It must be disposed of according to the laws governing Waste Electrical and Electronic Equipment (WEEE) at a recognised disposal facility.

THE FOLLOWING TABLE ADDRESSES THE INFORMATION REQUIREMENTS OF REG.2015/1188

Contact Details: Clarke International Ltd, Hemnall St, Epping, Essex, CM16 4LG Tel: 0208 988 7400			
Model Number	LITTLE DEVIL II		
Indirect Heating Functionality	No		
Direct Heat Output	10kW		
Indirect Heat Output	N/A		
Minimum permissible total flue length (vertical + horizontal)	N/A		
Fuel	Nitrogen oxides (NO _x) Emissions		
	Value	Unit	
Select Fuel Type: Gaseous	97	mg/kWh _{input} (GCV)	
Item	Symbol	Value	Unit
Heat output			
Nominal heat output	P _{nom}	10	kW
Minimum heat output	P _{min}	N/A	kW
Auxiliary electricity consumption			
At nominal heat output	e _{lmax}	0.0	kW
At minimum heat output	e _{l min}	n/a	kW
Power consumption			
In off mode	P ₀	0.00	W
In standby mode	P _{sm}	0.00	W
In idle mode	P _{idle}	N/A	W
In networked standby mode	P _{nsm}	N/A	W
Standby mode with display of information or status			No
Permanent pilot flame power requirement			
Pilot flame power requirement (if applicable)	P _{pilot}	N/A	kW
Efficiency (NCV)			
Useful efficiency at nominal heat output	η _{th, nom}	100.0	%
Useful efficiency at minimum heat output	η _{th, min}	N/A	%
Seasonal space heating energy efficiency	η _s	75.0	%

Type of heat output/room temperature control (select one)	
Single stage heat output, no temperature control	Yes
Two or more manual stages, no temperature control	No
With mechanical thermostat temp control	No
With electronic temperature control	No
Electronic temperature control with day timer	No
Electronic temperature control with week timer	No
Other control options (multiple selections possible)	
Room temperature control with presence detection	No
Room temperature control with open window detection	No
Room temperature control with distance control option	No
Room temperature control with adaptive start control	No
Room temperature control with working time limitation	No
Room temperature control with black bulb sensor	No
Room temperature control with self-learning functionality	No
Room temperature control with control accuracy	No

FUNCTION AND OPERATING PARAMETERS

This is a forced air heater meaning that a blower or fan pushes the air through the heater. Proper combustion depends upon the air flow.

Therefore, the heater must not be modified or operated with parts removed or missing. Likewise, safety systems must not be circumvented or modified in order to operate the heater.

This heater is intended for drying and the warming of commercial/industrial buildings where adequate ventilation is provided.

This heater is not intended;

- It must be operated as prescribed in the operating manual.
- It is not intended to be used for domestic use or for the heating of habitable areas.
- It is not intended to be used to reach and maintain a certain level of human thermal comfort within an enclosed space in which the heater is situated.
- It is not intended to be used in enclosed areas with restricted ventilation.
- It is not for use in areas with high levels of fluctuating drafts.
- **DO NOT** use for warming animals or live stock.

SAFETY INFORMATION

Read, and make sure you fully understand the following precautions and the hazards associated with this type of equipment.

1. **ONLY** use with the voltage specified and ensure the heater is properly earthed.
2. Use only the hose and factory preset regulator provided with the heater.
3. **ONLY** use propane gas, set up for vapour withdrawal.
4. Use only in well ventilated areas. Provide ventilation of at least 1.5ft² (1400cm²) opening of fresh outside air.
5. **DO NOT** use this heater in small rooms when they are occupied by persons not capable of leaving the room on their own unless constant supervision is provided.
6. For indoor use only. **DO NOT** use heater outdoors.
7. **DO NOT** use this heater in the immediate surrounds of a bath, a shower or a swimming pool
8. **DO NOT** use for the heating of habitable areas of domestic premises; for use in public buildings, refer to national regulations.
9. **DO NOT** use the heater in a basement or below ground level. Propane gas is heavier than air. If a leak occurs. propane gas will sink to the lowest possible level.
10. Keep the heater area clear and free from combustible materials, gasoline, paint thinner and other flammable vapours and liquids. For minimum safe clearance limits, see page 7.
11. **DO NOT** use heater in areas with high dust content. Dust is combustible.
12. **DO NOT** point the heater at the propane tank.
13. Keep propane tank(s) below 100°F (37.8°C).
14. Check the heater for damage before each use. **DO NOT** use if dropped. **DO NOT** use a damaged heater.
15. Check the hose before each use of the heater. If highly worn or cut, replace with hose specified by the manufacturer before using the heater.
16. Locate the heater on a stable and level surface if the heater is hot or operating.
17. Not intended for use on finished floors.
18. **NEVER** block the air inlet (rear) or air outlet (front) of the heater.
19. **DO NOT** cover the heater while in use.
20. Keep the heater away from strong drafts, water spray, rain or dripping water.
21. **DO NOT** leave the heater unattended.
22. **NEVER** move, handle or service a hot, operating or plugged-in heater.
23. To prevent injury wear gloves when handling the heater.

24. **NEVER** attach duct work to front or rear of the heater.
25. **DO NOT** alter the heater. Keep the heater in its original state. If the heater has been altered in any way, **DO NOT** use.
26. Turn off the propane supply and unplug the heater when not in use.
27. Use only original replacement parts. This heater must use design-specific parts. Improper replacement parts could be highly dangerous.
28. **DO NOT** place torsional stress on any hoses or cables.
29. **DO NOT** use this heater with a programmer, timer, separate remote control system or any other device that switches the heater on automatically, since a fire risk exists if the heater is covered or positioned incorrectly.
30. This heater is only intended for use in industrial, commercial and building industries, it is **NOT** to be used by children or persons with reduced physical, sensory or mental capabilities, or lack of experience and knowledge.
31. Keep all children and animals away from the heater.
32. **DO NOT** use for warming animals or live stock.
33. Children should **NOT** play with the appliance.
34. Turn off the gas supply and unplug the heater when not in use.
35. **BYSTANDERS:** When the heater is to be operated in the presence of other people the user is responsible for informing those present of the safety precautions and of the hazards involved.

SAFETY SYMBOLS

Please read all of the safety and operating instructions carefully before using this product. The following safety symbols may be found on the product.

	GENERAL HAZARD WARNING		HOT SURFACE, DO NOT TOUCH
	ALWAYS READ THIS MANUAL BEFORE USE	 DO NOT COVER	DO NOT COVER

RISKS OF CARBON MONOXIDE POISONING

Even though this heater operates very close to 100 percent combustion efficiency, it still produces small amounts of carbon monoxide.

- Carbon Monoxide (CO) is toxic.
- Pregnant women, persons with a heart or lung condition, anemia or under the influence of alcohol, or those at high altitude, are more likely to be effected by Carbon Monoxide.
- CO can build up in a confined space and failure to provide adequate ventilation can be fatal.

The early symptoms of asphyxiation caused by inadequate ventilation are:

- headache
- nausea
- dizziness
- dry mouth or sore throat

Should anyone show these symptoms, they must **GET FRESH AIR IMMEDIATELY**. Turn off the heater and have it serviced before using again.

Be sure to follow all warnings in this manual.

WE RECOMMEND THE USE OF A CARBON MONOXIDE DETECTOR

OPERATING SPACE

DO NOT obstruct the air intake to the heater and allow the following clearances from combustible surfaces.

Outlet (Front): 6 feet (1.8 m)

Sides: 6 feet (1.8 m)

Top: 6 feet (1.8 m)

Inlet (Rear): 2 feet (0.6 m)

Keep the heater as far as practical from propane tanks and **NEVER** point the heater directly at any propane tank.

ELECTRICAL CONNECTIONS



WARNING: READ THESE ELECTRICAL SAFETY INSTRUCTIONS THOROUGHLY BEFORE CONNECTING THE PRODUCT TO THE MAINS SUPPLY.

Connect the mains lead to a standard, 230 Volt (50Hz) electrical supply through an approved BS1363/A plug fitted with a BS1362 7 amp fuse.

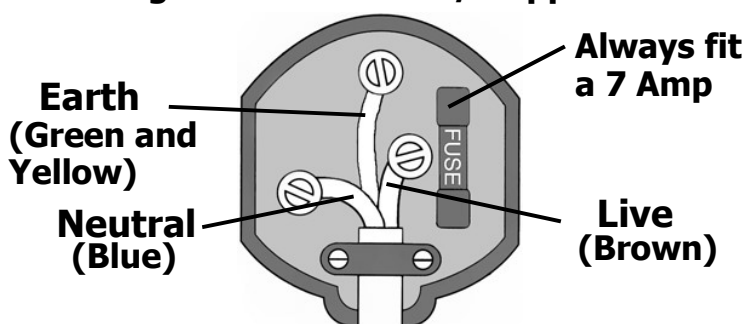
If the plug has to be changed because of damage, it must be removed and a replacement fitted, following the wiring instructions shown below. The old plug must be discarded safely, as insertion into a power socket could cause an electrical hazard.



**WARNING: WIRES IN THE MAINS LEAD ARE COLOURED IN ACCORDANCE WITH THE FOLLOWING CODE:
GREEN/YELLOW = EARTH, BLUE = NEUTRAL, BROWN = LIVE.**

- The BLUE wire must be connected to the terminal which is marked N or coloured black.
- The BROWN wire must be connected to the terminal which is marked L or coloured red.
- The YELLOW AND GREEN wire must be connected to the terminal which is marked E or \perp or coloured green.

Plug must be BS1363/A approved.



Ensure that the outer sheath of the cable is firmly held by the clamp

We strongly recommend that this machine is connected to the mains supply through a Residual Current Device (RCD)

If you are not sure, consult a qualified electrician. DO NOT try to do any repairs.

UNPACKING

When unpacking, check the heater for possible shipping damage. Should any damage be apparent, please notify your Clarke dealer immediately. Your heater is fully assembled,- only the electrical and gas supplies need connecting.

THEORY OF OPERATION

THE FUEL SYSTEM: The hose/regulator assembly attaches to the propane gas supply. This provides fuel to the heater.

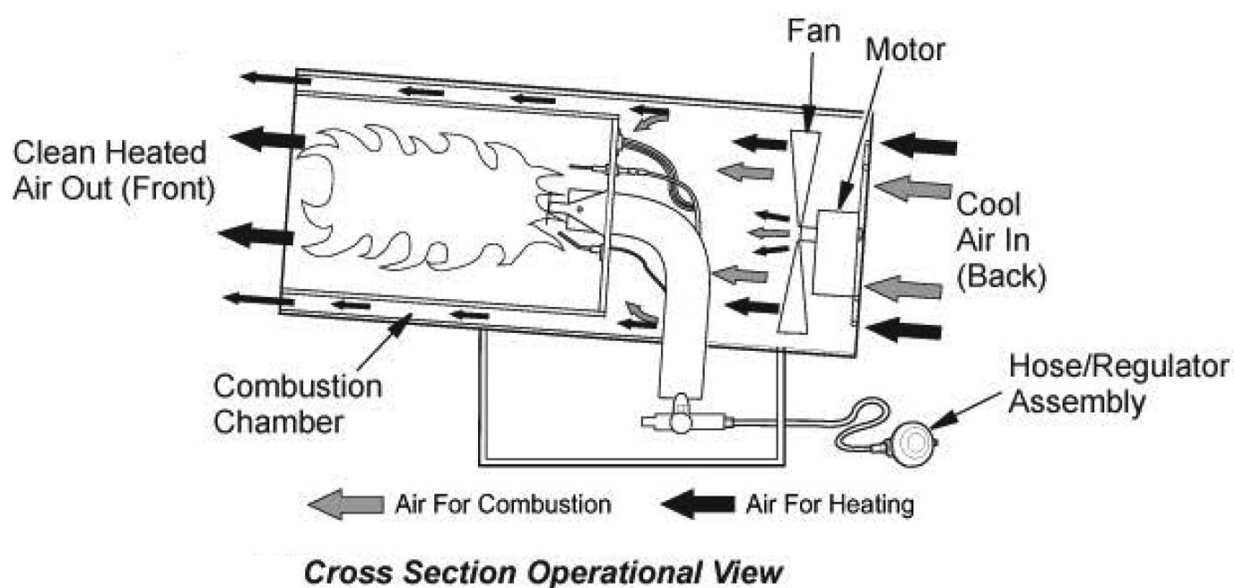
THE AIR SYSTEM: The motor turns the fan. The fan pushes air into and around the combustion chamber. This air is heated and provides a stream of clean, hot air.

THE IGNITION SYSTEM: The piezo igniter lights the burner.

THE AUTOMATIC CONTROL SYSTEM: Should the flame extinguish for any reason, the thermocouple will quickly cool, causing the Flame Failure valve to close, shutting off the gas supply.

Similarly, should there be a power failure, the safety shut off valve (solenoid) will shut off the gas supply.

The machine is also fitted with a thermal overload protection, which will operate should the unit overheat, shutting off the gas supply to the heater.



PROPANE GAS SUPPLY



WARNING: THE FITTING AND CHANGING OF THE GAS CYLINDERS MUST BE CARRIED OUT IN A FLAME FREE ATMOSPHERE.

WARNING: YOU SHOULD ONLY USE PROPANE GAS CYLINDERS AVAILABLE FROM BUILDERS MERCHANTS OR GAS SUPPLIERS.

This range of portable, direct fired gas heaters is designed to give safe, efficient and reliable operation, and are for use with propane gas only.

As with all mechanical equipment, optimum performance will only be achieved if the correct application and servicing procedures are followed.



WARNING: PROPANE GAS CYLINDERS MUST BE USED AND STORED IN ACCORDANCE WITH THE 'HIGHLY FLAMMABLE LIQUIDS AND LIQUEFIED PETROLEUM GASES REGULATIONS 1972'

In order to reduce the risk of icing up when operating at long periods at maximum capacity, you should use a larger capacity gas bottle.

Ensure the Propane gas bottle, gas hose and electric cable, are positioned behind the unit, away from the heat.

IN THE EVENT OF A GAS LEAK

1. Put out all smoking materials and other open flames.
2. **DO NOT** operate electric switches or light matches.
3. Close all supply valves on gas tank or cylinder.
4. **DO NOT** use your phone. USE a neighbour's phone or your mobile phone from outside the building or wherever you detected the gas leak to call the fire service.
5. Immediately get everyone out of the building or area.
6. **DO NOT** re-enter the building, or area until a trained service person or the fire service advises it is safe to return.

INSTALLATION



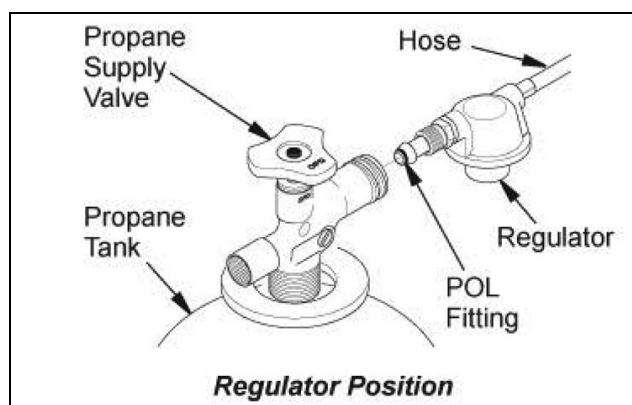
WARNING: READ AND UNDERSTAND THE WARNINGS IN THE SAFETY INFORMATION SECTION, PAGE 3. THEY ARE NEEDED TO SAFELY OPERATE THIS HEATER. FOLLOW ALL LOCAL REGULATIONS WHEN USING THIS HEATER.



WARNING: TEST ALL GAS PIPING AND CONNECTIONS FOR LEAKS AFTER INSTALLATION OR SERVICING. NEVER USE AN OPEN FLAME TO CHECK FOR A LEAK. APPLY A MIXTURE OF LIQUID SOAP AND WATER TO ALL JOINTS. BUBBLES FORMING SHOW A LEAK. CORRECT ALL LEAKS AT ONCE.

1. Provide a propane supply system (see Propane Gas Supply).
2. Connect POL (Prest-o-Lite) fitting on hose/regulator assembly to the propane tank(s).
 - Turn POL fitting anti-clockwise into the threads on the tank. Tighten firmly using a wrench.

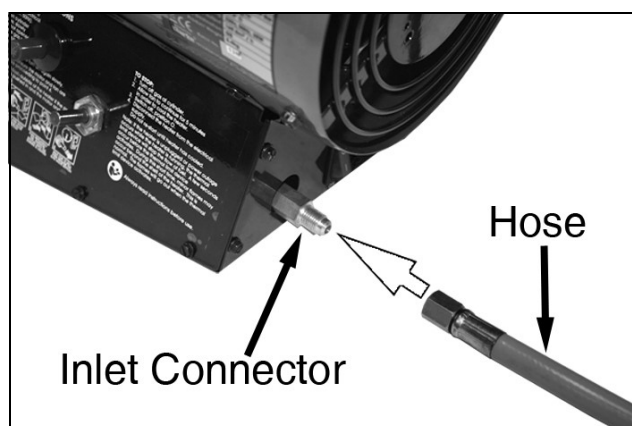
IMPORTANT: Position the regulator so that the hose leaving the regulator is in a horizontal position. This places the regulator vent in the proper position to protect it from the weather.



3. Connect the hose to the valve inlet connector. Tighten firmly using a wrench.

IMPORTANT: Use extra hose or piping if needed between hose/regulator assembly and propane tank. You must use the regulator supplied with heater.

4. Open the propane supply valve on the propane tank(s) slowly.



NOTE: If the supply valve is not opened slowly, the check valve on the propane tank will activate and stop gas flow. If this happens, close the propane supply valve and open again slowly.

5. Check all connections for leaks. Apply a mixture of liquid soap and water to all gas joints. Bubbles forming show a leak that must be corrected.
6. Close the propane supply valve.

VENTILATION



WARNING: PROVIDE AT LEAST A 1.5 FT² (1400 CM²) OPENING OF FRESH, OUTSIDE AIR WHILE RUNNING HEATER. IF PROPER FRESH, OUTSIDE AIR VENTILATION IS NOT PROVIDED, CARBON MONOXIDE POISONING CAN OCCUR. PROVIDE PROPER FRESH, OUTSIDE AIR VENTILATION BEFORE RUNNING HEATER.

STARTING PROCEDURE



WARNING: BEFORE STARTING THE HEATER, YOU MUST ENSURE THAT THE MINIMUM VENTILATION REQUIREMENTS ARE OBSERVED TO AVOID THE RISK OF CARBON MONOXIDE POISONING.

TO START THE HEATER

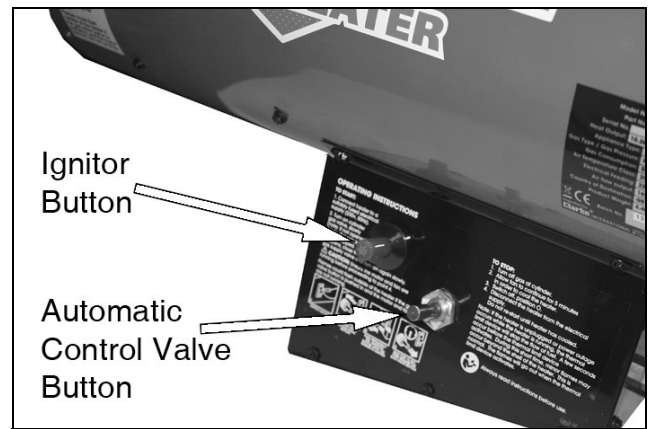
1. Follow all installation, ventilation, and safety information.
2. Locate the heater on stable and level surface.
 - Make sure strong drafts do not blow into the front or rear of the heater.
3. Plug the heater into a suitable 230V mains socket.
4. Set the on/off switch to the on position.
 - The motor will start, the fan will turn, forcing air from the front of the heater.
5. Open the propane supply valve on the propane tank(s) slowly.

NOTE: If not opened slowly, the excess-flow check valve on the propane tank will stop the gas flow. If this happens, close the propane supply valve and open again slowly.



WARNING: MAKE SURE THAT THE MOTOR AND FAN ARE RUNNING BEFORE PUSHING IN AUTOMATIC CONTROL VALVE BUTTON. FLAMES COULD FLASH OUTSIDE HEATER IF THE MOTOR AND FAN ARE NOT RUNNING.

6. Push in and hold the automatic control valve button.
7. Push the piezo igniter button.
 - You may need to push the piezo igniter button 3-8 times until the burner lights.
 - When the burner lights, keep the automatic control valve button pushed in.



8. Release the automatic control valve button after 15 seconds.

NOTE: If the heater fails to ignite, the hose may have air in it. If so, keep the automatic control valve button pressed and wait 20 seconds. Release the automatic control valve button and wait 20 seconds for unburned fuel to exit the heater, repeat steps 6-8.

STOPPING PROCEDURE

TO STOP THE HEATER

1. Tightly close propane supply valve on propane tank(s).
 - The heater will burn away gas left in supply hose.
2. Allow the heater to cool down for 5 minutes, then switch off the heater.
3. Unplug the heater.

TO RESTART THE HEATER

1. Wait five minutes after stopping the heater.
2. Repeat steps under 'To Start The Heater'.

STORAGE



CAUTION: DISCONNECT THE HEATER FROM PROPANE SUPPLY TANK(S)

1. Store propane tank(s) in safe manner.
 - Follow all local regulations.
 - Always store propane tanks outdoors.
2. Place plastic cover caps over any brass fittings, the connector and hose/regulator assembly.
3. Store in a dry, clean and safe place.
4. When taking heater out of storage, always check inside of heater. Insects and small animals may place foreign objects in heater.

MAINTENANCE



WARNING: NEVER SERVICE THE HEATER WHILE IT IS PLUGGED IN, CONNECTED TO THE PROPANE SUPPLY, OPERATING OR HOT. SEVERE BURNS OR ELECTRIC SHOCK MAY OCCUR.

WARNING: KEEP THE HEATER CLEAR AND FREE FROM ANY COMBUSTIBLE MATERIALS, GASOLINE AND OTHER FLAMMABLE VAPOURS AND LIQUIDS.

WARNING: DO NOT BLOCK THE FLOW OF COMBUSTION OR VENTILATION AIR.

1. Keep heater clean. Clean heater annually or as needed to remove dust and debris. If heater is dirty or dusty, clean heater with a damp cloth.
2. Inspect the heater before each use. Check connections for leaks. Apply mixture of liquid soap and water to connections. Bubbles forming show a leak. Correct all leaks at once.
3. Inspect the hose/regulator assembly before each use. If the hose is highly worn or cut, replace with a hose specified by the manufacturer.
4. Have heater inspected yearly by a qualified service agency.
5. Keep the inside of the heater free from combustible and foreign objects.

TROUBLESHOOTING



WARNING: NEVER SERVICE THE HEATER WHILE IT IS PLUGGED IN, CONNECTED TO PROPANE SUPPLY, OPERATING OR HOT. SEVERE BURNS AND ELECTRICAL SHOCK CAN OCCUR.

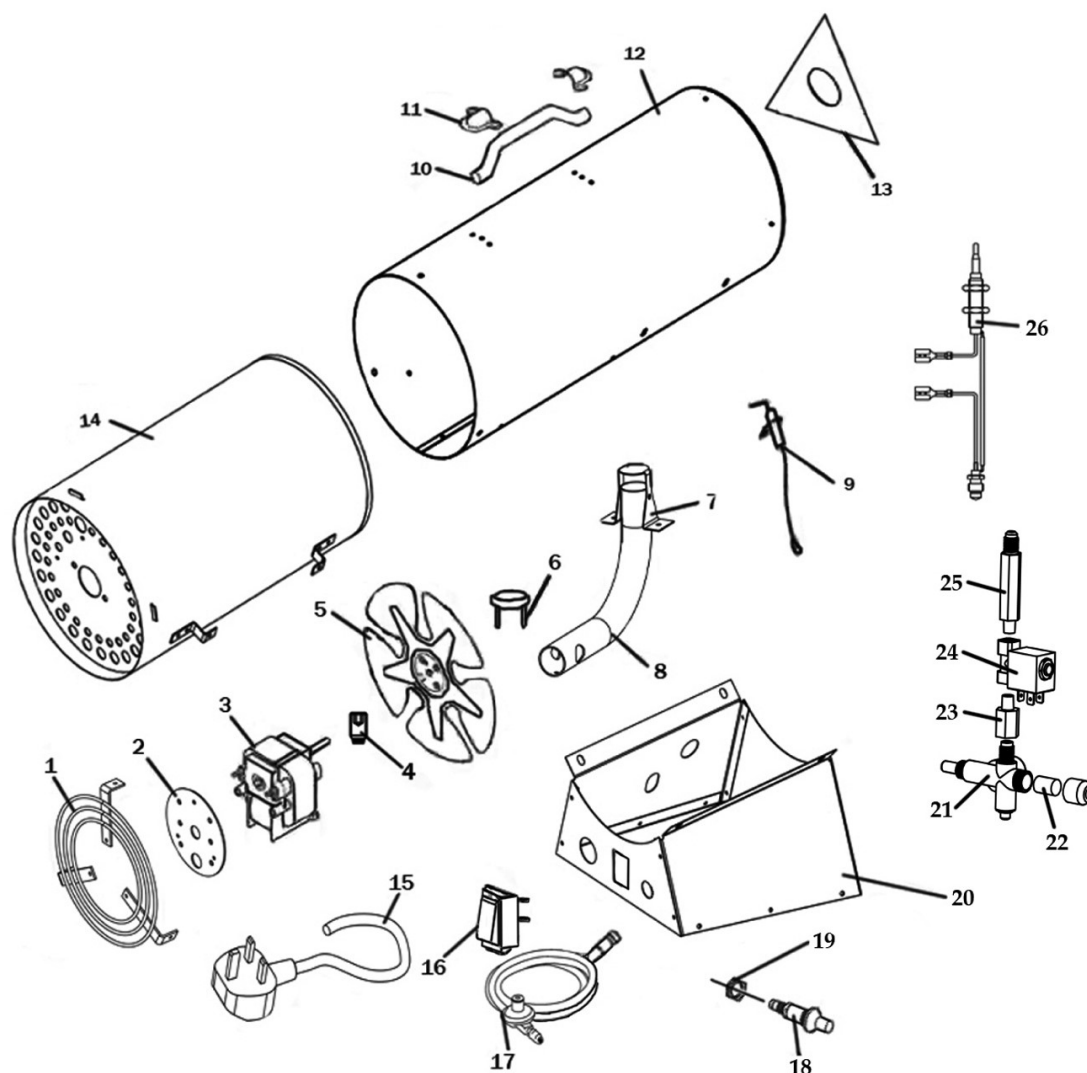
OBSERVED FAULT	POSSIBLE CAUSE	REMEDY
Fan does not turn when heater is plugged in	No electrical power to the heater	Check voltage to electrical outlet. If voltage is good, check heater power cable for breaks
	Structural damage	Return to your dealer for repair.
	Defective motor	Return to your dealer for repair.
Heater will not ignite	User did not follow installation or operation instructions properly	Repeat installation and operation instructions. See Installation and Starting, page 8+9
	<p>No spark at igniter. If no spark seen, the fault may be:</p> <p>A) Loose or disconnected igniter wire</p> <p>B) Wrong spark gap</p> <p>C) Piezo igniter loose</p> <p>D) Bad igniter electrode</p>	<p>A) Check igniter wire. Tighten or reattach loose igniter wire.</p> <p>B) Set gap between igniter electrode and target plate to 0.17" (0.43 cm)</p> <p>C) Tighten nut holding piezo igniter to base of heater</p> <p>D) Replace igniter electrode.</p> <p>If you see a spark at the igniter have the heater serviced by a qualified service person.</p>

OBSERVED FAULT	POSSIBLE CAUSE	REMEDY
Heater shuts down while running	High surrounding air temperature causing thermal limit device to shut down heater	This can happen when running heater in temperatures above 85°F. Only run the heater in cooler temperatures
	Restricted air flow	Check heater inlet and outlet. Remove any obstructions

SPECIFICATIONS

Gas Type	Propane
Regulator	M30-700
Hose Length	1.5m
Rated Heat Output	10kW(35,000 BTU/HR)
Maximum Pressure	Bottle Pressure
Minimum Pressure	14.5PSI/1 Bar
Regulator Output	10PSI/0.69 Bar
Operating Voltage/Frequency	220-240V/50Hz
Plug Fuse Rating	7A
Output	20W
Rated Input Power	35W
Rated Input Current	0.35A
RPM@230V, No Load	2900
Electrical Insulation Class	I
Duty Cycle	S1 Continuous
Ingress protection rating	IPX0
Ignition	Manual, Piezo
Fuel Consumption	0.74 kg/hr
Fuel Orifice Port Size	0.75 mm
Heated Air Output	169.8 m ³ /hr
Weight	5.4 kg
Dimensions (L x W x H)	465 x 210 x 325 mm

PARTS DIAGRAM



1	Grill Assembly	GFLDEV201	14	Middle Cylinder Assembly	GFLDEV214
2	Motor Mounting Bracket	GFLDEV202	15	Power Cord	GFLDEV215
3	Motor Assembly	GFLDEV203	16	On/off Switch	GFLDEV216
4	Screw, 45# 1/4"-28*1/3	GFLDEV204	17	Hose/regulator Assembly	GFLDEV217
5	Fan	GFLDEV205	18	Piezo Igniter	GFLDEV218
6	Thermal Switch Kit	GFLDEV206	19	Pal-nut Fastener	GFLDEV219
7	Burner Tube Part 2	GFLDEV207	20	Control Box Assembly	GFLDEV220
8	Burner Tube Part 1	GFLDEV208	21	Control Valve Assembly	GFLDEV221
9	Electrode Igniter	GFLDEV209	22	Magnet Valve	GFLDEV222
10	Handle	GFLDEV210	23	Regulator Connector	GFLDEV223
11	Handle Clip	GFLDEV211	24	Magnet Valve Assembly	GFLDEV224
12	Outer Cylinder	GFLDEV212	25	Air Tube	GFLDEV225
13	Front Guard	GFLDEV213	26	Thermocouple	GFLDEV226

DECLARATION OF CONFORMITY



DECLARATION OF CONFORMITY

This is an important document and should be retained.

We hereby declare that this product(s) complies with the following legislation: The following standards have been applied to the product(s):

2016/426	Gas Appliance Regulation	EN 61000-3-3:2013+A1:2019+A2:2021, EN IEC 60335-2-102:2024+A11:2024, EN 62233:2008,
2009/125/EC	Ecodesign Directive	IEC 62321-4:2013, IEC 62321-5:2013, IEC 62321-6:2015, IEC 62321-8:2017, EN 16129:2013,
2014/30/EU	Electromagnetic Compatibility Directive	EN 60335-1:2012+A11:2014+A13:2017+A1:2019+A2:2019+A14:2019+A15:2021+A16:2023,
2014/35/EU	Low Voltage Directive	EN IEC 61000-3-2:2019+A1:2021+A2:2024, EN IEC 55014-1:2021, EN IEC 55014-2:2021,
2011/65/EU	Restriction of Hazardous Substances (RoHS) Directive	EN 1596:1998/A1:2004, IEC 62321-3-1:2013, IEC 62321-7-1:2015, IEC 62321-7-2:2017

This declaration is issued, in accordance with legislation (EU) 2016/426, under the sole responsibility of the manufacturer.

The UKCA mark was first applied in: 2022

Manufacturer:	Clarke International Ltd, Hemnall Street, Epping, Essex, CM16 4LG, United Kingdom	Notified Body:	DBI Certification A/S (ID Number: 2531), Jernholmen 12, DK-2650 Hvidovre, Denmark
Product Description:	Gas Space Heater	GAR Certificate Number:	2531-GAR-CGC10360, 2531-GAR-CGC10088
Model Number(s):	LITTLE DEVIL II	GAR Certificate Issue:	07/12/2022, 19/04/2023
Serial/Batch Number:	Refer to product/package label	GAR Certificate Expiry:	13/06/2028, 21/04/2028
Date of Issue:	21/03/2025	Signed:	 J.A. Clarke Director

LITTLE DEVIL II UKCA Clarke DOC 032125

Page 1 of 1



DECLARATION OF CONFORMITY

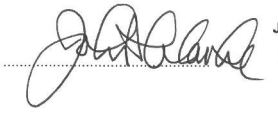
This is an important document and should be retained.

We hereby declare that this product(s) complies with the following legislation: The following standards have been applied to the product(s):

2016/426	Gas Appliance Regulation	EN 61000-3-3:2013+A1:2019+A2:2021, EN IEC 60335-2-102:2024+A11:2024, EN 62233:2008,
2009/125/EC	Ecodesign Directive	IEC 62321-4:2013, IEC 62321-5:2013, IEC 62321-6:2015, IEC 62321-8:2017, EN 16129:2013,
2014/30/EU	Electromagnetic Compatibility Directive	EN 60335-1:2012+A11:2014+A13:2017+A1:2019+A2:2019+A14:2019+A15:2021+A16:2023,
2014/35/EU	Low Voltage Directive	EN IEC 61000-3-2:2019+A1:2021+A2:2024, EN IEC 55014-1:2021, EN IEC 55014-2:2021,
2011/65/EU	Restriction of Hazardous Substances (RoHS) Directive	EN 1596:1998/A1:2004, IEC 62321-3-1:2013, IEC 62321-7-1:2015, IEC 62321-7-2:2017

This declaration is issued, in accordance with legislation (EU) 2016/426, under the sole responsibility of the manufacturer.

The CE mark was first applied in: 2011

Manufacturer:	Clarke International Ltd, Fitzwilliam Hall, Fitzwilliam Place, Dublin 2, Republic of Ireland	Notified Body:	DBI Certification A/S (ID Number: 2531), Jernholmen 12, DK-2650 Hvidovre, Denmark
Product Description:	Gas Space Heater	GAR Certificate Number:	2531-GAR-CGC10360, 2531-GAR-CGC10088
Model Number(s):	LITTLE DEVIL II	GAR Certificate Issue:	07/12/2022, 19/04/2023
Serial/Batch Number:	Refer to product/package label	GAR Certificate Expiry:	13/06/2028, 21/04/2028
Date of Issue:	21/03/2025	Signed:	 J.A. Clarke Director

LITTLE DEVIL II CE Clarke DOC 032125

Page 1 of 1

A SELECTION FROM THE VAST RANGE OF

Clarke®

QUALITY PRODUCTS



AIR COMPRESSORS
From DIY to industrial, Plus air tools, spray guns and accessories.

GENERATORS
Prime duty or emergency standby for business, home and leisure.

POWER WASHERS
Hot and cold, electric and engine driven - we have what you need

WELDERS
Mig, Arc, Tig and Spot. From DIY to auto/industrial.

METALWORKING
Drills, grinders and saws for DIY and professional use.

WOODWORKING
Saws, sanders, lathes, mortisers and dust extraction.

HYDRAULICS
Cranes, body repair kits, transmission jacks for all types of workshop use.

WATER PUMPS
Submersible, electric and engine driven for DIY, agriculture and industry.

POWERTOOLS
Angle grinders, cordless drill sets, saws and sanders.

STARTERS/CHARGERS
All sizes for car and commercial use.



PARTS & SERVICE:

0208 988 7400

Parts Enquiries
Parts@clarkeinternational.com

Servicing & Technical Enquiries
Service@clarkeinternational.com

SALES: UK 01992 565333 or Export 00 44 (0)1992 565335

Clarke® INTERNATIONAL Hemnall Street, Epping, Essex CM16 4LG
www.clarkeinternational.com